



新能源PV产品变流器输出滤波器

High-Current three-phase EMC/RFI filter for PV



产品特征 Features

- 专为PV发电系统逆变电站电磁兼容/安规要求而设计
Reduces conducted emissions towards the solar panel
- 具有优异的共、差模噪声抑制能力
Good filtering performance of common-mode and differential-mode
- 额定电流范围从10A到1600A适应KW~MW级的逆变系统
Rated currents 25A to 1500A DC for PV inverters EMC test.
- 额定电压高达690VAC,满足电力、电能和铁路等系统需求。
Rated operating voltage 690VAC, use in high power motor drives, inverters and converters.

应用场合 Applications

主要应用在工业三相电场合,特别应用在光伏、铁路、风力发电、变频器行业应用场合,应用在变频器输入电抗器的前端,主要解决变频器负载系统对电网的高频干扰

Mainly used in PV and high power motor drives, inverters and converters.

规格表 Specification

| 产品型号 Filter P/N | 额定电 流 Rate current at 50°C | 功率等级 Typical inverter (kW) | 端接型式 Input/output connection | 额定电压 Max. operating voltage | 工作频率 Operating frequency | 最大泄漏电流 Leakage current | 耐压等级 Hipot test voltage | 气候类别 Climatic category |
|--------------------|--|-------------------------------------|------------------------------------|--------------------------------------|--------------------------------|--------------------------------------|---|------------------------------|
| FLKI06-6A | 6 | 3 | | 3× 520/300VAC | DC-60Hz | <6mA@ 500VAC/50Hz (三相平衡 状态) | 2250VDC, (line/line) 3500 VDC, (lines/G) | 25/85/21 |
| FLKI06-10A | 10 | 5 | | | | | | |
| FLKI3QI-20SE | 20 | 10 | | | | | | |
| FLKI05-35A | 35 | 17.5 | | | | | | |
| FLVI3QI-60SE | 60 | 30 | | | | | | |
| FLVI1RK-100SE | 100 | 50 | | | | | | |
| FLVI1RK-180SE | 180 | 90 | | | | | | |
| FLVI3RK-400BE | 400 | 220 | | | | | | |
| FLVI4RK-600BE | 600 | 315 | | | | | | |
| FLVI5RK-1000BE | 1000 | 560 | | | | | | |
| FLVI6RK-1200BE | 1200 | 600 | | | | | | |
| FLVI6RK-1600BE | 1600 | 800 | | | | | | |

差损曲线 Insertion Loss

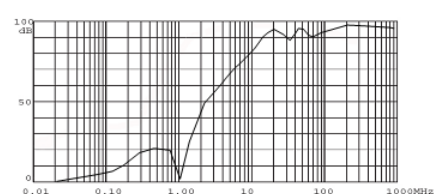
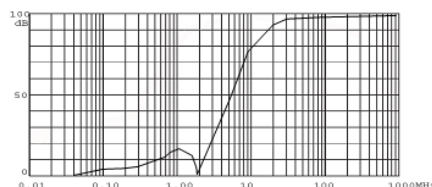
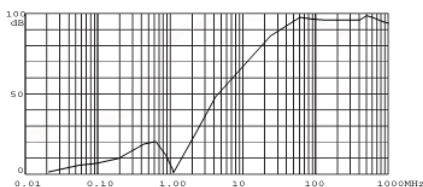
插入耗损是参考 CISPR17标准,在50Ω系统条件下测定的 (Per CISPR 17 , Z=50Ω)

—— 共模 CM common mode

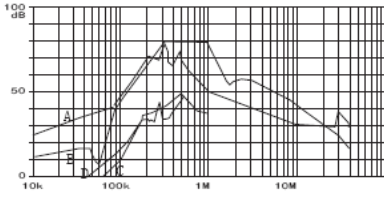
FLKI06-6A FLKI06-10A
FLKI06-20A FLKI06-35A

100-180A

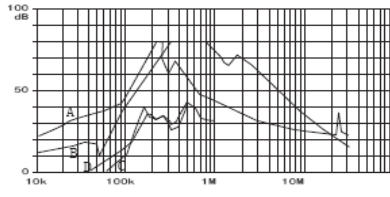
400-600A



1000A

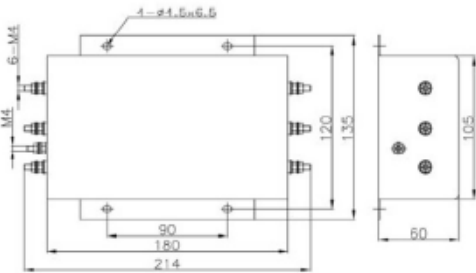


1200-1600A

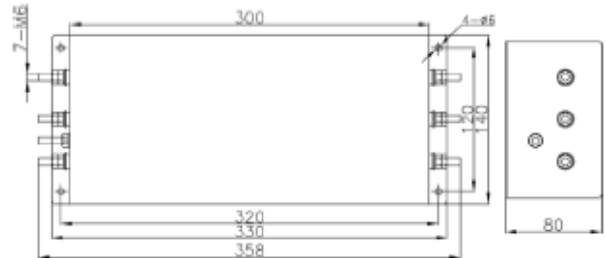


外形尺寸图 Dimensional Drawing (unit: mm)

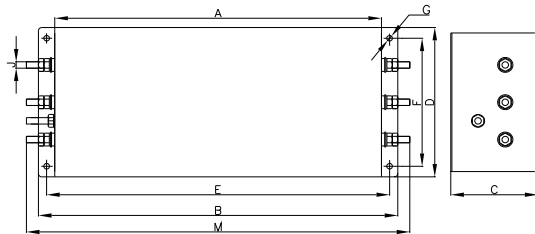
FLKI06-6A FLKI06-10A FLKI06-20A



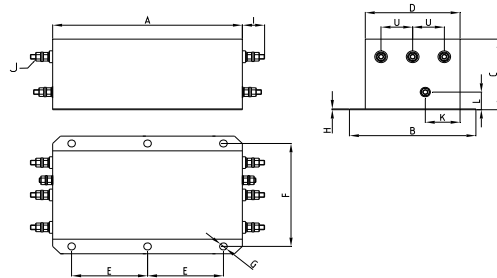
FLKI05-35A



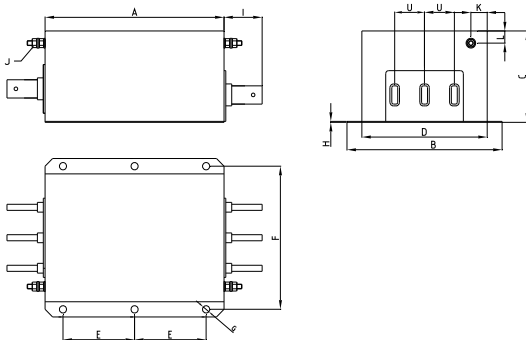
FLVI3QI-20SE FLVI3QI-60SE



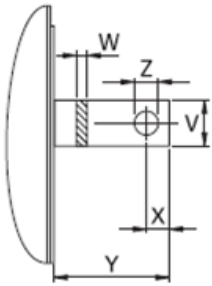
FLVI1RK-100SE FLVI1RK-180SE



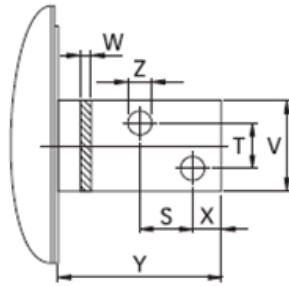
400-1600A



400-1000A

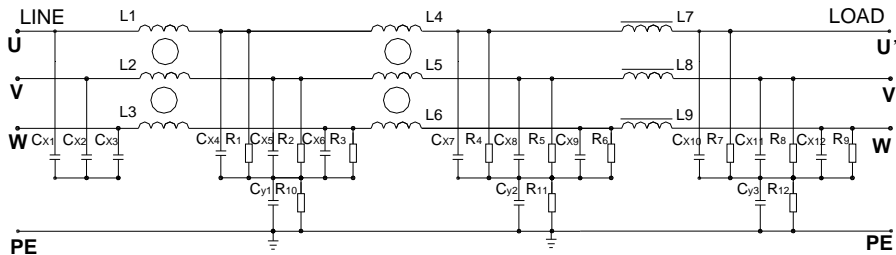


1200-1600A



| Filter P/N | 结构尺寸 | | | | | | | | | | | | | | | | | | | | | | | | |
|--------------------|---------|---------|---------|---------|-----|---------|-------------|----|--------|---------|--------|--------|---------|---------|---------|---|---|--------|--------|--------|--------|--------|---------------|--------|---------|
| | A | B | C | D | E | F | G | H | I | J | K | L | M | N | O | S | T | U | V | W | X | Y | Z | | |
| FLVI3QI-20SE | 30 0 | 33 0 | 80 | 14 0 | 320 | 12 0 | Φ 6 | -- | -- | M4 | -- | -- | 36 0 | -- | -- | | | -- | -- | -- | -- | -- | -- | | |
| FLVI3QI-60SE | 30 0 | 33 0 | 80 | 14 0 | 320 | 12 0 | Φ 6 | -- | -- | M6 | -- | -- | 36 0 | -- | -- | | | -- | -- | -- | -- | -- | -- | | |
| FLVI1RK-100SE | 30 0 | 21 0 | 12 0 | 16 0 | 120 | 18 5 | Φ 1 2 | 2 | 3 2 | M1 0 | 5 5 | 3 0 | 42 0 | 17 1 | 12 7 | | | 5 0 | | | | | | | |
| FLVI1RK-180SE | 30 0 | 21 0 | 12 0 | 16 0 | 120 | 18 5 | Φ 1 2 | 2 | 3 2 | M1 0 | 5 5 | 3 0 | 42 0 | 17 1 | 12 7 | | | 5 0 | | | | | | | |
| FLVI3RK-400BE | 30 0 | 26 0 | 11 5 | 21 0 | 120 | 23 5 | Φ 1 2 | 2 | 4 3 | M1 2 | 2 0 | 2 0 | 44 0 | 22 1 | 12 2 | | | 6 0 | 2 5 | 6 | 1 5 | 4 0 | Φ 10. 5 | | |
| FLVI4RK-600BE | 30 0 | 26 0 | 13 5 | 21 0 | 120 | 23 5 | Φ 1 2 | 2 | 4 3 | M1 2 | 2 0 | 2 0 | 44 0 | 22 1 | 14 | | | 6 0 | 2 5 | 8 | 1 5 | 4 0 | Φ 10. 5 | | |
| FLVI5RK-1000B E | 35 0 | 28 0 | 17 0 | 23 0 | 145 | 25 5 | Φ 1 2 | 3 | 5 3 | M1 2 | 2 5 | 2 5 | 51 0 | 24 1 | 17 7 | | | 6 0 | 4 0 | 8 | 2 0 | 5 0 | Φ 14 | | |
| FLVI6RK-1200B E | 35 0 | 28 0 | 17 0 | 23 0 | 145 | 25 5 | Φ 1 2 | 3 | 5 3 | M1 2 | 2 5 | 2 5 | | | | | | 6 0 | 4 0 | 1 0 | 2 0 | 5 0 | Φ 14 | | |
| FLVI6RK-1600B E | 40 0 | 30 0 | 16 0 | 25 0 | 170 | 27 5 | Φ 1 2 | 3 | 9 3 | M1 2 | 2 5 | 2 5 | | | | | | 2 6 | 2 6 | 6 0 | 6 0 | 1 0 | 1 7 | 9 0 | Φ 14 |

电路原理图 Circuit diagram





太阳能发电专用滤波器

DC系列 DC EMC/EMI Filter for PV inverters



产品特征 Features

- 专为PV发电系统逆变电站电磁兼容/安规要求而设计
Reduces conducted emissions towards the solar pane
- 具有优异的共、差模噪声抑制能力
Good filtering performance of common-mode and differential-mode
- 额定电流范围从 100A 到 1500A 适应 KW~MW 级的逆变系统
Rated currents 100A to 1500A DC
- 额定电压高达 1000VDC , 满足电力、电能和铁路等系统需求。
Rated operating voltage 1000VDC

应用场合 Applications

主要应用在风电、PV 发电、铁路等行业
逆变系统中
Mainly used in PV and inverter

规格表 Specification

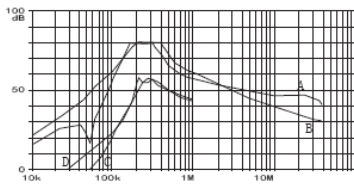
| 产品型号 Filter P/N | 额定电 流 Rated current at 50°C | 功率等级 Typical inverter (KW) | 端接型式 Input/output connection | 额定电压 Max. operating voltage | 工作频率 Operating frequency | 耐压等级 Hipot test voltage | 气候类别 Climatic category |
|--------------------|---|-------------------------------------|------------------------------------|--------------------------------------|--------------------------------|---|------------------------------|
| FLVBCNJ-100SE | 100A | 40 | | 1000VDC | DC | 3000VDC, (line/line) 3600 VDC, (lines/G) | 25/85/21 |
| FLVBDNJ-150SE | 150A | 60 | | | | | |
| FLVBEPP-250BE | 250A | 100 | | | | | |
| FLVBFPP-400BE | 400A | 150 | | | | | |
| FLVBFPP-600BE | 600A | 250 | | | | | |
| FLVBGPP-1000BE | 1000A | 400 | | | | | |
| FLVBHPP-1200BE | 1200A | 400 | | | | | |
| FLVBHPP-1500BE | 1500A | 500 | | | | | |

差损曲线 Insertion Loss

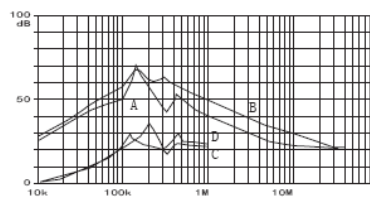
插入耗损是参考 CISPR17标准,在50Ω系统条件下测定的 (Per CISPR 17 , Z=50Ω)

—— 共模 CM common mode

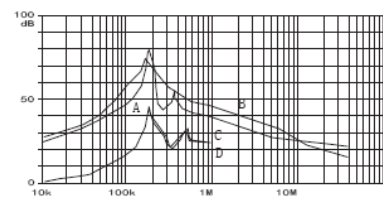
100 to 150A types



250A types

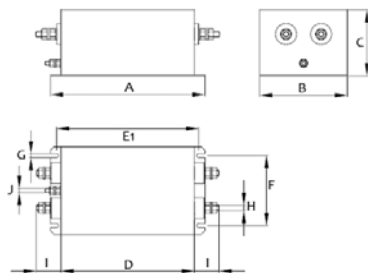


400 to 1500A types

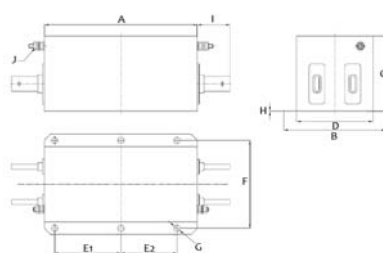


外形尺寸图 Dimensional Drawing (unit: mm)

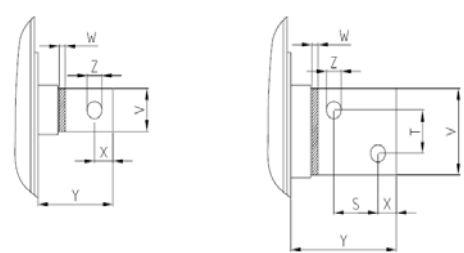
100-150A



250-1500A



250-1500A



| Filter P/N | 结构尺寸 Dimensions (mm) | | | | | | | | | | | | | | | | | | |
|----------------|----------------------|-----|-----|-----|----------------|----------------|-----|-----|-----|-----|-----|----|----|----|----|----|----|-----|-------|
| | A | B | C | D | E ₁ | E ₂ | F | G | H | I | J | S | T | U | V | W | X | Y | Z |
| FLVBCNJ-100SE | 220 | 125 | 95 | 190 | 202.5 | -- | 100 | 5.5 | M8 | 45 | M6 | -- | -- | -- | -- | -- | -- | -- | -- |
| FLVBDNJ-150SE | 250 | 140 | 115 | 220 | 232.5 | -- | 120 | 5.5 | M10 | 50 | M8 | -- | -- | -- | -- | -- | -- | -- | -- |
| FLVBEPP-250BE | 300 | 180 | 110 | 130 | 130 | 110 | 155 | Φ12 | 2 | 58 | M10 | -- | -- | 70 | 20 | 5 | 15 | 58 | Φ9 |
| FLVBFPP-400BE | 300 | 190 | 110 | 140 | 130 | 110 | 165 | Φ12 | 2 | 58 | M10 | -- | -- | 70 | 25 | 6 | 15 | 58 | Φ10.5 |
| FLVBFPP-600BE | 300 | 190 | 110 | 140 | 130 | 110 | 165 | Φ12 | 2 | 58 | M10 | -- | -- | 70 | 25 | 8 | 15 | 58 | Φ10.5 |
| FLVBGPP-1000BE | 300 | 200 | 140 | 150 | 130 | 110 | 175 | Φ12 | 3 | 65 | M12 | -- | -- | 70 | 40 | 8 | 20 | 65 | Φ14 |
| FLVBHPP-1200BE | 300 | 200 | 140 | 150 | 130 | 110 | 175 | Φ12 | 3 | 65 | M12 | -- | -- | 70 | 40 | 8 | 20 | 65 | Φ14 |
| FLVBHPP-1500BE | 300 | 200 | 150 | 150 | 130 | 110 | 175 | Φ12 | 3 | 100 | M12 | 43 | 26 | 70 | 60 | 10 | 17 | 100 | Φ14 |

电路原理图 Circuit diagram

